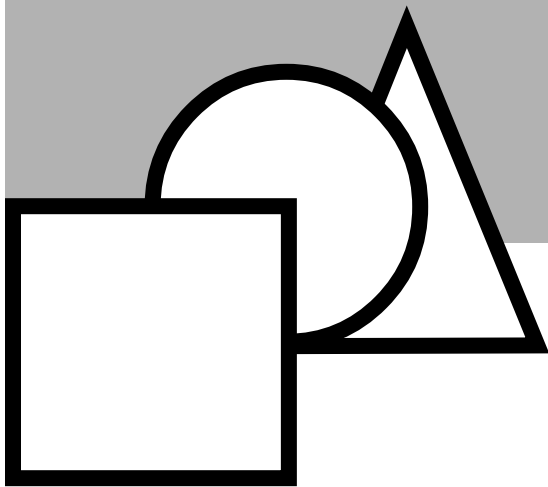


Ecocure Ink Curing Tunnel

User's Manual



Trans Tech: Complete Pad Printing Solutions



Contents

Technical Specifications 2
 Ecocure Operating Procedures 3
 Controls 4
 Heater Box 6
 Conveyor 8
 Electrical Schematic 10
 Recommended Spare Parts 11

Technical Specifications

Power requirements	17A 120VAC single phase
Conveyor length	6 feet
Curing section	24" x 18" x 6"
Belt speed	0 - 12 fpm
Maximum temperature (process)	300° F.

For best results when printing this file, set printer resolution to 300 dpi.

While every effort has been made to ensure the accuracy of this manual, Trans Tech cannot be held responsible for any errors or omissions. We reserve the right to make changes to technical specifications without prior notice.

Ecocure Operating Procedures

Start Up

The Ecocure should be pre-heated for approximately 5 - 10 minutes. Higher curing temperatures require more pre-heating time.

The heat control has 5 settings ranging from '1' to 'FULL'. The belt speed control has settings ranging from 0 - 100. The tables below give actual results relating to the settings (Note: the belt speed control response is not linear).

Since the 'cure' is a result of several variables, i.e.: substrate type, heat element height, end panel heights, heat control setting and belt speed, it is always necessary to conduct thorough tests to insure that proper curing is being achieved.

The figures below should be used as a starting point.

Heat Setting	Element Temp.	Element Height	Process Temperature in 1 minute
1	215° F	3.5"	100° F
2	375° F	3.5"	130° F
3	550° F	3.5"	180° F
4	750° F	3.5"	360° F

Note: Results were obtained on a white vinyl substrate.

Belt Speed	Feet per Minute	Time in Process
20	<1	3 min. 15 sec.
30	<1	54 sec.
40	2	31 sec.
50	3	21 sec.
60	<4	16 sec.
70		13 sec.
80		10 sec.
90		9 sec.
100		7 sec.

Shut Down Procedure

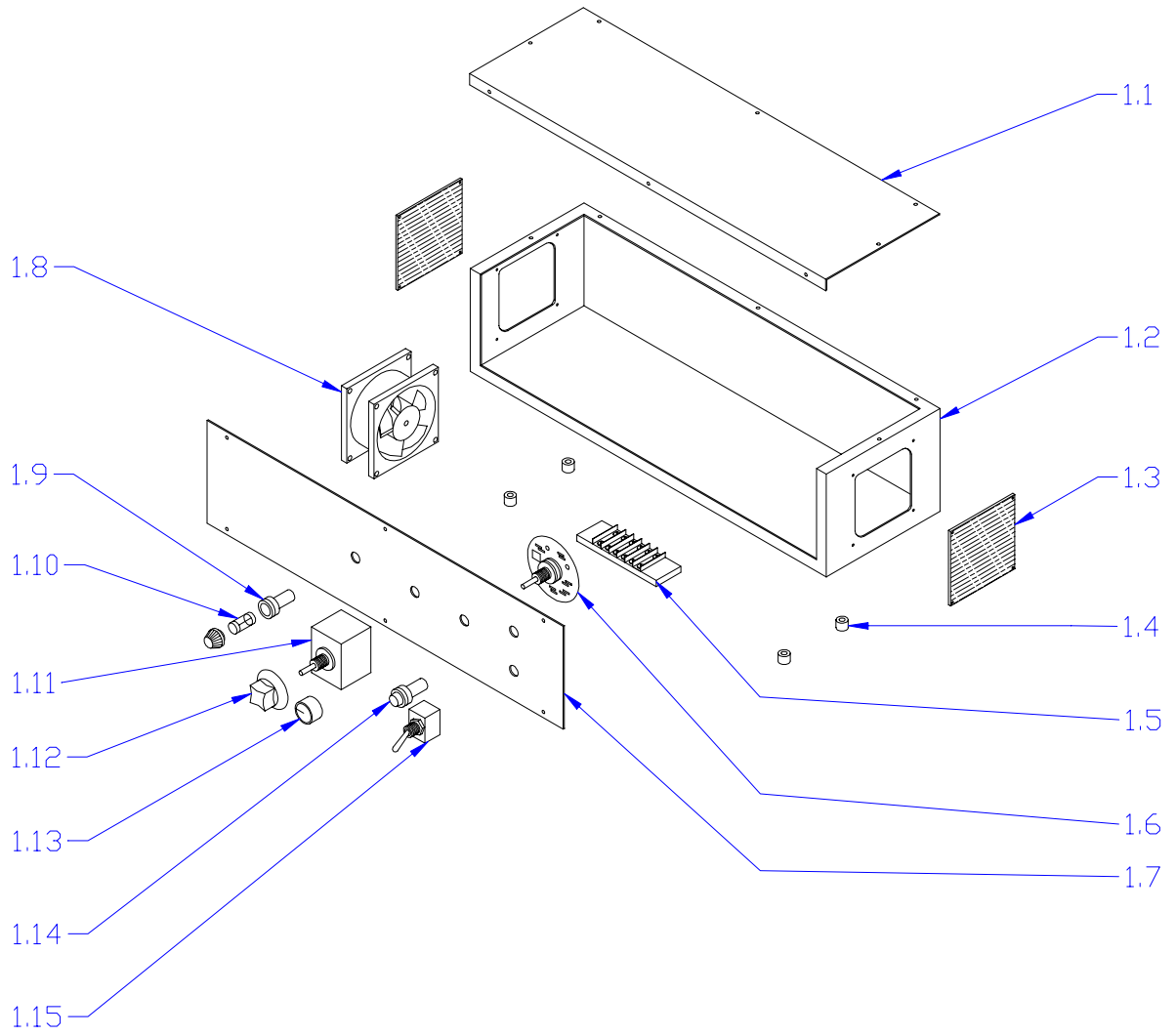
About 5 minutes before shutting off the Ecocure, turn off the heat while allowing the belt to run. This will keep the belt from being damaged by overexposure to heat.



Controls

Item	Part Number	Description
1.1	90100517	Top cover
1.2	90100518	Enclosure, control
1.3	31100327	Filter
1.4	90100519	Stand off
1.5	90100520	Terminal strip
1.6	91100001	Belt speed controller (includes knob 1.13)
1.7	90100521	Front panel
1.8	31100326	Fan, 3"
1.9	90100522	Fuse holder
1.10	90100523	Fuse 3A (3AG)
1.11	31100330	Temperature controller (includes knob 1.12)
1.14	90100524	Pilot light
1.15	90100525	Power switch

Note: Fasteners not shown are standard inch sizes that can be obtained from your local hardware supplier.

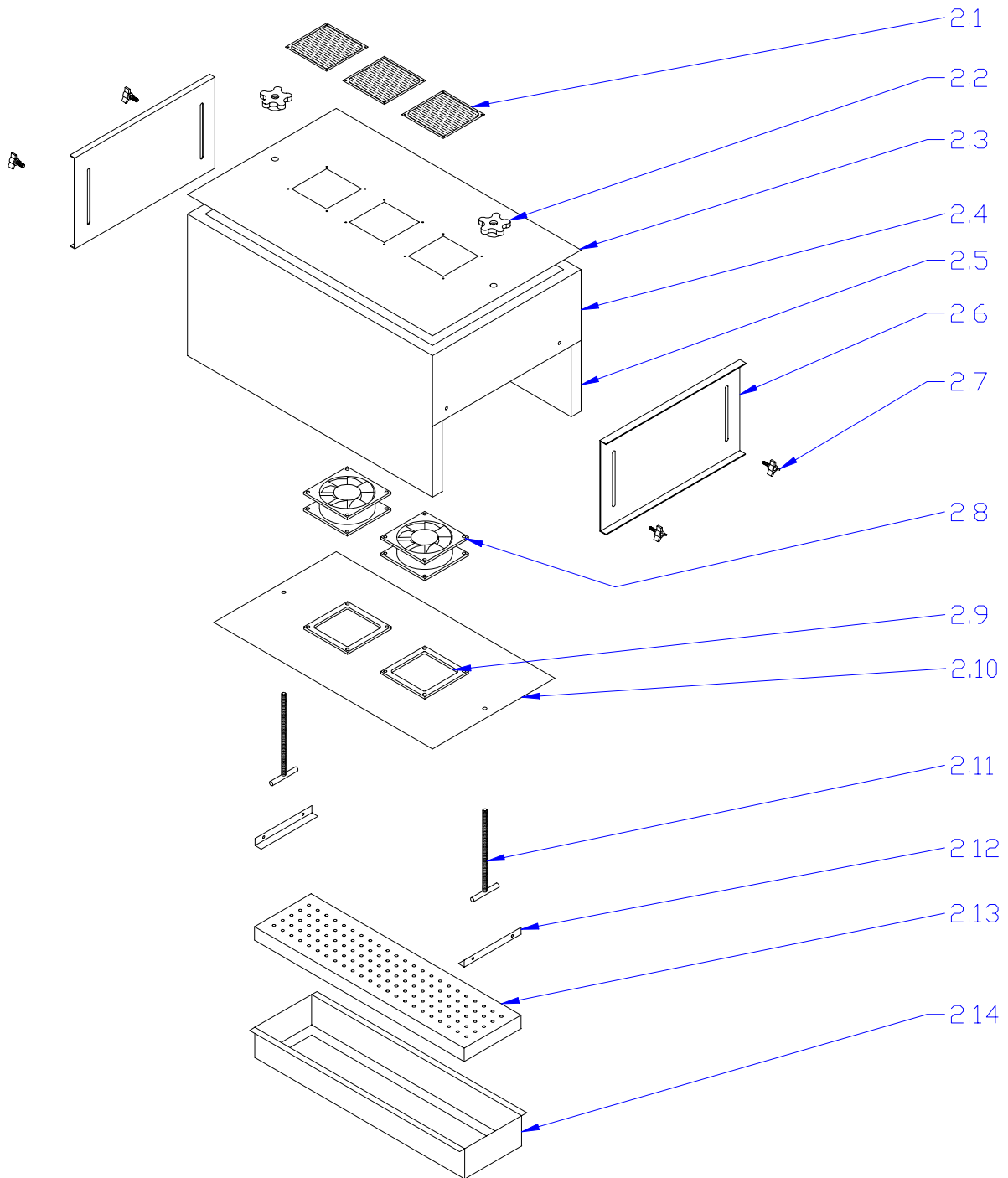




Heater Box

Item	Part Number	Description
2.1	90100032	Fan guard
2.2	90100526	Star knob
2.3	30100461	Top cover
2.4	90100527	End panel
2.5	90100528	Side panel
2.6	90100529	End gate
2.7	90100530	Star knob
2.8	31100328	Fan, 4"
2.9	90100531	Insulating spacer
2.10	90100545	Mounting plate
2.11	90100546	T bolt
2.12	90100547	Angle clip
2.13	31100329	Heating element
2.14	90100548	Box assembly
2.15	30100462	Decal set

Note: Fasteners not shown are standard inch sizes that can be obtained from your local hardware supplier.

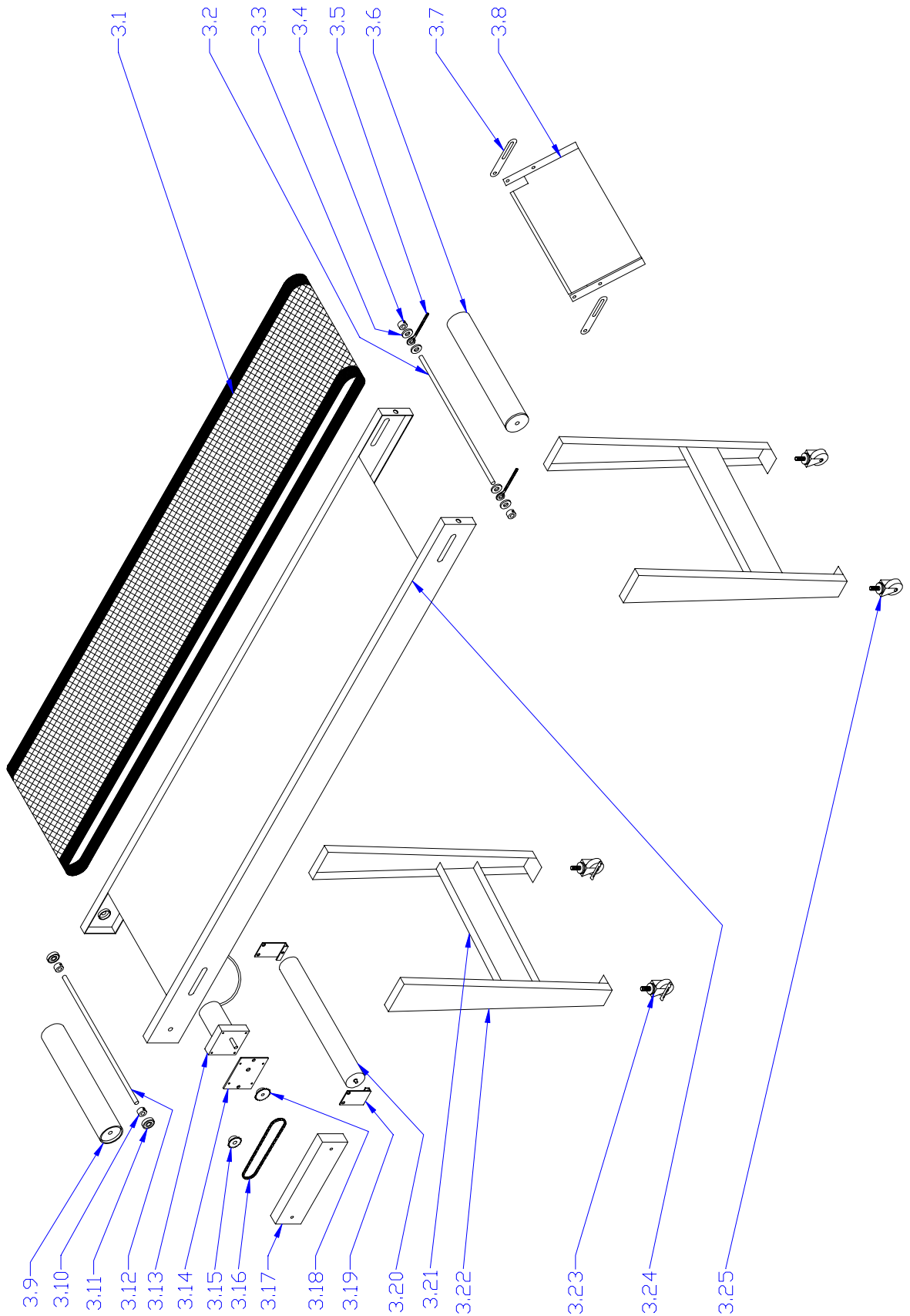




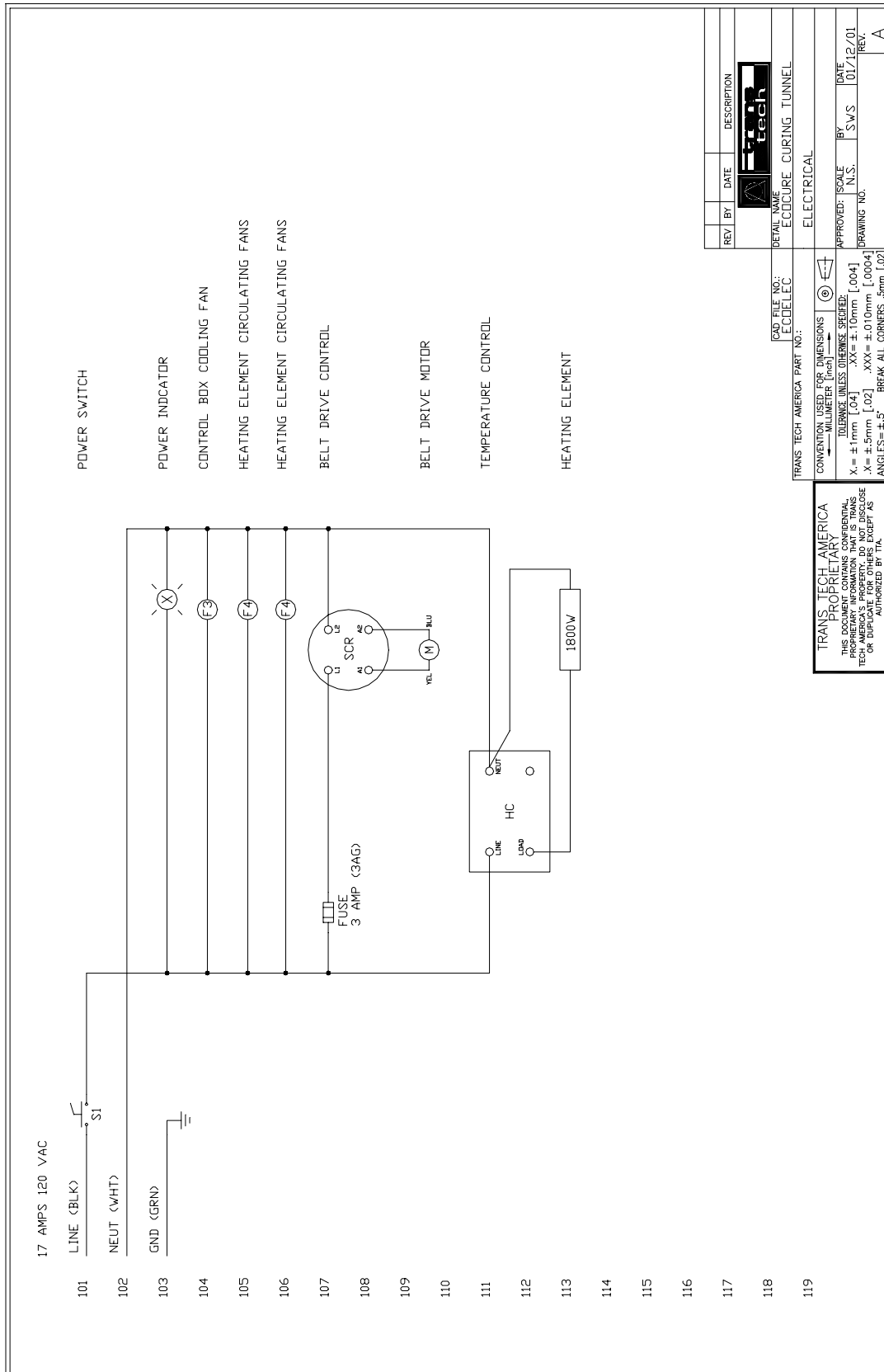
Conveyor

Item	Part Number	Description
3.1	30100443	Belt
3.2	90100549	Shaft
3.3	90100550	Spacer washer
3.4	90100551	Shaft collar
3.5	90100552	Eye bolt
3.6	90100553	Roller assembly
3.7	90100554	Chute brace
3.8	90100555	Discharge chute
3.9	90100556	Roller assembly
3.10	90100551	Shaft collar
3.11	90100557	Bearing
3.12	90100549	Shaft
3.13	91100002	Gearmotor
3.14	90100558	Mounting plate
3.15	90100559	Chain sprocket
3.16	90100560	Chain
3.17	90100561	Chain cover
3.18	90100562	Chain sprocket
3.19	90100563	Mounting bracket
3.20	90100564	Roller assembly
3.21	90100565	Leg brace
3.22	90100566	Leg
3.23	90100567	Caster, locking
3.24	90100568	Frame
3.25	90100569	Caster, non-locking

Note: Fasteners not shown are standard inch sizes that can be obtained from your local hardware supplier.



Electrical Schematic



REV	BY	DATE	DESCRIPTION

CAD FILE NO.: ECDELEC

TRANS TECH AMERICA PART NO.:

COMMENTS: SEE FOR DIMENSIONS UNLESS OTHERWISE SPECIFIED:
 TOLERANCE UNLESS OTHERWISE SPECIFIED:
 X = ± 1mm [.04] XX = ± 10mm [.004]
 Y = ± 5mm [.02] XXX = ± 0.10mm [.0004]
 ANGLES = ±.5° BREAK ALL CORNERS, 5mm [.02]

TRANS TECH AMERICA PROPRIETARY
 THIS DOCUMENT CONTAINS PROPRIETARY INFORMATION THAT IS TRANS TECH AMERICA'S PROPERTY. DO NOT DISCLOSE OR REPRODUCE WITHOUT AUTHORIZATION BY TTA.

Recommended Spare Parts

Part Number	Description	Quantity
31100330	Temperature controller	1
31100328	Fan	1
30100443	Belt	1
90100523	Fuse, 3A	2
31100329	Heating element	(1)

() = optional